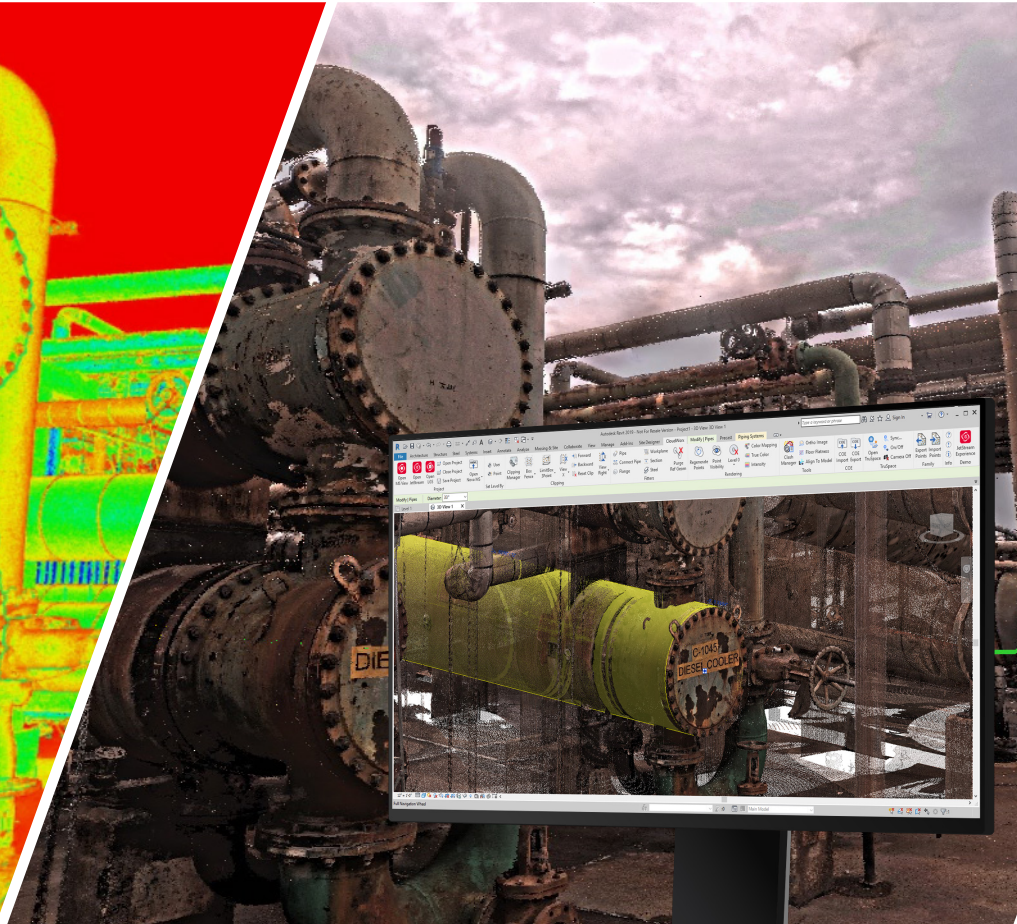


# Leica Cyclone WORKFLOW

Universal access to your digital reality data.



## Flexible

Files created with Cyclone WORKFLOW offer the greatest flexibility and utility to customers. Add models, open in VR and preserve their flexibility with every edit.



## Simple

Cyclone WORKFLOW brings simplicity and automation to data processing and publishing in Cyclone REGISTER family products. Anonymise and clean data automatically to save time in the office and quickly publish to a range of formats in one bulk operation.



## Universal

Files published with Cyclone WORKFLOW are compatible with the full range of Leica Geosystems Reality Capture Software including REGISTER family products, Cyclone 3DR, TruView, CloudWorx and Map360.

leica-geosystems.com



- when it has to be **right**

**Leica**  
Geosystems

PART OF  
**HEXAGON**

# Leica Cyclone WORKFLOW

Prepare – Publish – Manage – Analyse



CONTENT PUBLISHED	CYCLONE FIELD 360 FAMILY	CYCLONE REGISTER 360+ FAMILY	CYCLONE WORKFLOW
TruView Local dataset		♦	
JetStream Enterprise project		♦	
Direct publish to TruView Cloud	♦	♦	
Direct publish to Cyclone ENTERPRISE		♦	
CloudWorx connect to Cyclone REGISTER 360+		♦	
E57 file	♦	♦	
LGS file		♦	
LAS file		♦	
RCP file		♦	
SEMA file			♦
Pano image as JPG		♦	
Pano image as EXR			♦
WayPoint pano images as EXR & JPG			♦
Project name		♦	
Project creation date		♦	
Project creator info		♦	
Project stats metadata		♦	
SiteMap(s)		♦	
Control		♦	
Setups + Metadata		♦	
RGB pano image layer		♦	
HDR pano image layer		♦	
Intensity hue pano image layer		♦	
Intensity grayscale pano image layer		♦	
IR pano image layer + Temps <sup>1</sup>		♦	
Multi-layer pano image		♦	
Pano depthmap		♦	
3D point cloud RGB attributes		♦	
3D point cloud intensity hue attributes		♦	
3D point cloud grayscale attributes		♦	
3D point cloud HDR attributes <sup>2</sup>		♦	
Multiple UCS <sup>3</sup>		♦	
Clips		♦	
GeoTags + Metadata		♦	
Image assets		♦	
Video assets		♦	
Audio assets		♦	
PDF assets		♦	
Smooth surface cleaning		♦	
Classification		♦	
Supports models in TruView <sup>3</sup>			♦
Supports TruView VR Viewing			♦
Auto-blur faces and licence plates			♦

1 - Also supported publishing directly to TruView Cloud.

2 - Point cloud HDR attributes are only supported from HDR data from the RTC360 and BLK360 and viewable only in TruView.

3 - Only LGS files published from 2020.1 releases or later will support models. Product functionality is subject to change.